

INDUSTRIAL MAINTENANCE PAINTING PROGRAM

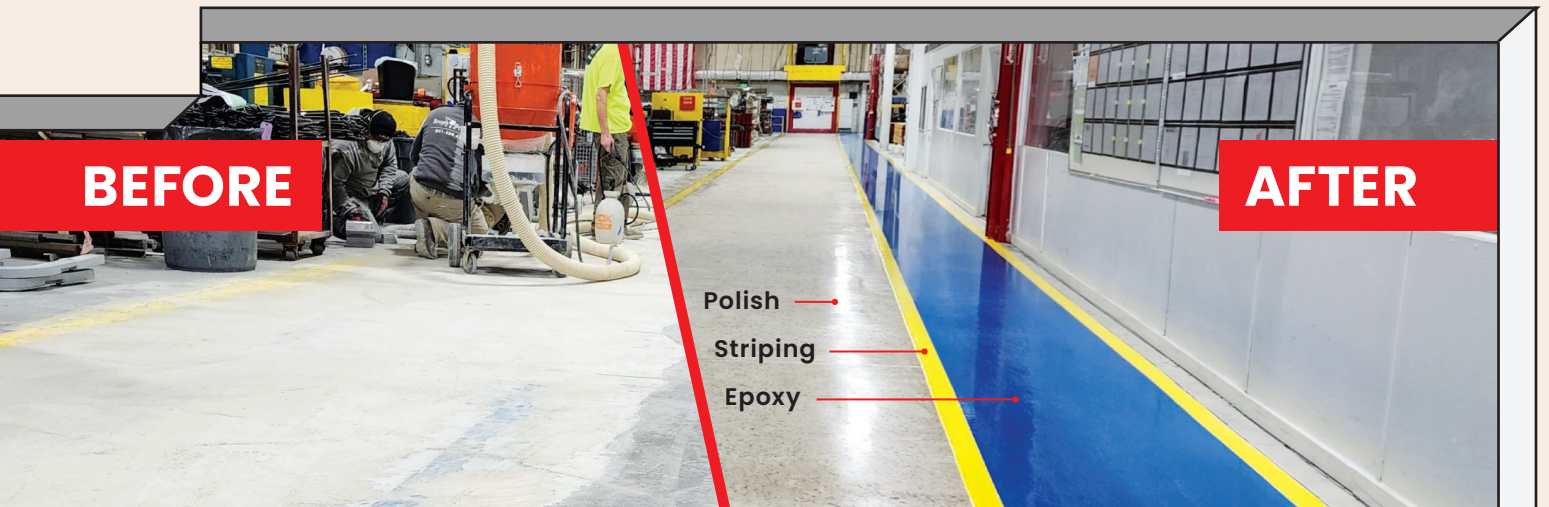
INDUSTRIAL COATINGS
CLEANING SERVICES
**FLOOR COATINGS &
POLISHING**

Whatever your facility needs, Stephens has got you covered. From the parking lot to the rooftop!

**FLEXIBLE &
STRATEGIC
SCHEDULING**

We work with you all the way! Schedule around your time and business needs.

**24/7 SCHEDULING
OPTIONS**



WHAT WE CAN DO FOR YOU

Specialty Painting & Coatings

Industrial Cleaning

Epoxy Floor Coatings

Interior Painting

Exterior Painting

Parking Lot Striping

Warehouse Striping

Striping Removal

Pressure Washing

Sand & Dry Ice Blasting

Scheduling

From the **Floor to the Roof** we do it ALL! We strive to get the perfect fit for you and your company. Our professional staff is trained to fulfill your needs and make your facility look it's best.

Have a busy work week with lots of moving parts? **No problem!** We have flexible scheduling and can establish hours that help you keep your work flow moving and your building looking maintained.

- Nights
- Weekends
- Shutdowns

Working with Stephens Commercial Painting provides incredible benefits. We make it easy by sending a crew that is your own. Our staff will get to know your facility and your expectations. Other benefits of a long term relationship include:

- The same billing process every time
- A schedule you know and can adjust
- Straightforward communication
- Not having to re-train every few weeks

Time and Material Package

T&M packages are our most common. They are based on a \$65-\$70 per man hour plus material. Most companies prefer this fit because it can help to moderate how much they spend per visit.



THE STEPHENS SAFETY COMMITMENT

Safety isn't a matter of luck. It has to be taken seriously. Here at Stephens Commercial Painting it takes everyone working together cooperatively to really be safe.

Training Program

Every employee at Stephens Commercial completes a comprehensive training program before stepping foot on your job-site. Our crews are OSHA 10 Certified.

Safety Processes

What good is training if you don't follow a process? At Stephens Commercial, we have a 15 point safety checklist that ensures every job is painted correctly, from the parking lot to the rooftop.

Experienced Foremen

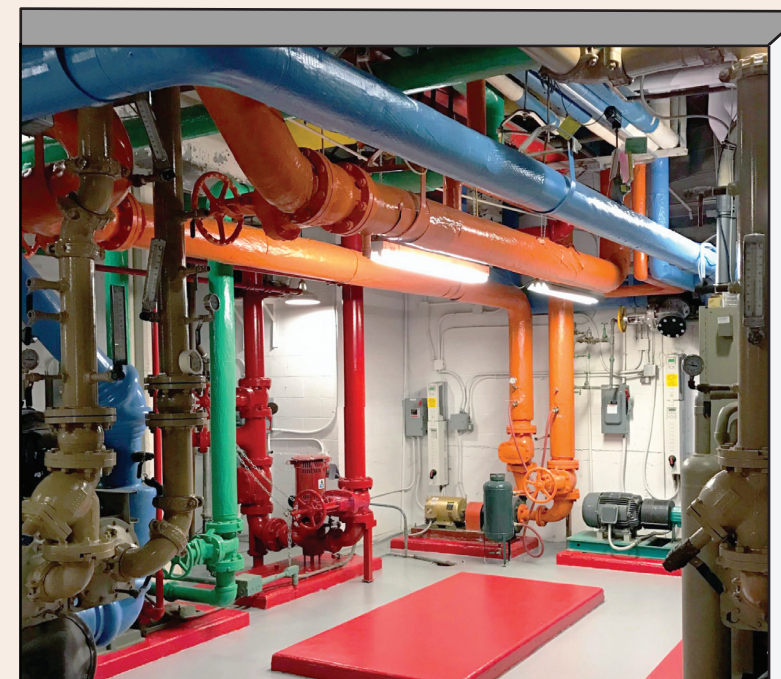
Every client project has an experienced foreman onsite daily, to manage all aspects of the job, and ensure safety processes are being followed.

Insured

Our insurance policy is your peace of mind. In over 40 years, we've rarely used it, but we have the coverage to work on any size commercial project, no matter the complexity.

Full-time Employees

No temps, no day-laborers. Only trained, background-checked, experienced painters work for Stephens Commercial.



TRUST, INTEGRITY, AND DOING THE RIGHT THING

We call it the Stephens Way: our values in action, evident every time we collaborate, plan or get the hard work of a project done.

Trust is rare in the painting world. We work harder to gain and keep yours.

From the amount of services we offer to our dedication to safety, we strive to ensure you get everything you need while doing it the right way.

THE STEPHENS WAY

As a company, our goal has always been to be the most professional painting and coatings contractor out there. Our mission is to be agile, process-driven, and to do everything we do with integrity from the top of the company to the bottom. Our culture is one of always striving to do the right thing. It's not just something we say.

STEPHENS
COMMERCIAL PAINTING

We work tirelessly to be the exception. It's why every job we do is inspected by management. Our estimates, timelines, and uniformed crews are always on point. This is the Stephens Way.



FROM THE PARKING LOT TO THE ROOFTOP

STEPHENS COMMERCIAL PAINTING HAS YOU COVERED

Exterior & Interior Painting

Stephens Commercial Painting has completed over 10,000 exterior and interior projects across DFW. From concrete to brick, stucco to metal, drywall and any other surface, our crews have the expertise to maintain your facility.

Floor Coatings

Floor Coatings are an economical and safe alternative for commercial and industrial concrete flooring systems or uncoated concrete floors. Floor coatings can add value to any facility. Chemical and stain resistance, aesthetically pleasing, and safety are all benefits of the right floor coating in your facility.

Industrial Equipment

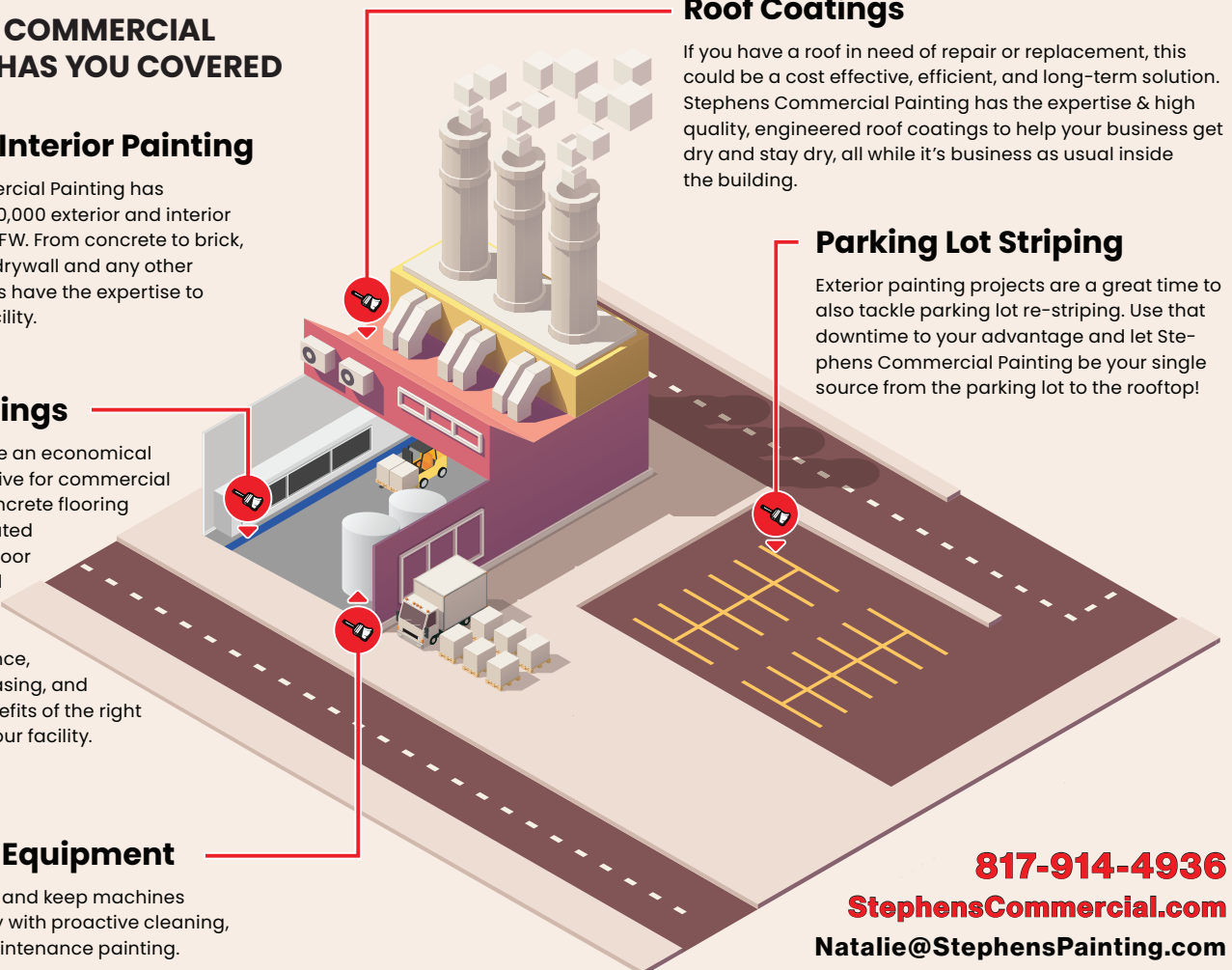
Maximize uptime and keep machines running smoothly with proactive cleaning, coatings and maintenance painting.

Roof Coatings

If you have a roof in need of repair or replacement, this could be a cost effective, efficient, and long-term solution. Stephens Commercial Painting has the expertise & high quality, engineered roof coatings to help your business get dry and stay dry, all while it's business as usual inside the building.

Parking Lot Striping

Exterior painting projects are a great time to also tackle parking lot re-striping. Use that downtime to your advantage and let Stephens Commercial Painting be your single source from the parking lot to the rooftop!



817-914-4936

StephensCommercial.com

Natalie@StephensPainting.com